



FLIR TrafiOne

Smart City Sensor

FLIR TrafiOne is an all-round detection sensor for traffic monitoring and dynamic traffic signal control. Offered in a compact and affordable package, the FLIR TrafiOne uses thermal imaging and Wi-Fi tracking technology to provide traffic engineers with high-resolution data on vehicles, bicycles and pedestrians at intersections and in urban environments.

FLIR TrafiOne helps traffic engineers to improve traffic flows, reduce vehicle idling time, monitor congestion, enhance safety for vulnerable road users, collect data and measure travel & delay times for different transport modes.

THERMAL IMAGING SENSOR

FLIR TrafiOne uses thermal imaging to detect the presence of pedestrians and bicyclists that are approaching or waiting at the curbside or walking on the crossing. Thermal imaging cameras can see in total darkness, through shadows and sun glare, and thus provide reliable traffic detection 24/7. FLIR TrafiOne is connected to the traffic signal controller via dry contact outputs or via TCP/IP network communication to allow for a more dynamic control of traffic signals based on presence or volume information.

WI-FI TRACKING

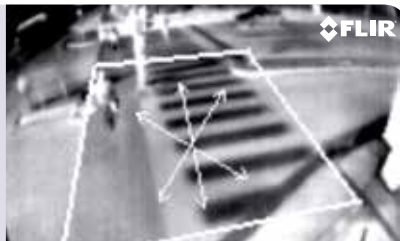
FLIR TrafiOne has optional Wi-Fi tracking technology that can be used to capture traffic flow data. By monitoring Wi-Fi Mac addresses of Wi-Fi enabled devices such as smartphones, TrafiOne can determine travel & route times along road segments. Via Wi-Fi signal strength information TrafiOne can also measure queue delay times at intersections.

FLIR CLOUD ANALYSIS

The information collected by TrafiOne can be accessed for further analysis by FLIR's cloud-based analysis solution. Smart analytics transform the data into useful traffic insights, critical to understand the road network performance. Traffic engineers can use the user-friendly dashboard to generate reports and start taking measures where they are needed.

KEY BENEFITS:

- ALL-IN-ONE SENSOR
- 24/7 DETECTION AND IN VARIOUS WEATHER CONDITIONS, NO NEED FOR ADDITIONAL LIGHTING
- LOW MAINTENANCE
- SIMPLE AND QUICK CONFIGURATION OVER SECURE WI-FI CONNECTION
- WI-FI MONITORING CAPABILITIES (OPTIONAL)
- VISUAL HD STREAM (OPTIONAL)



FLIR TrafiOne uses thermal imaging to detect the presence of pedestrians and bicyclists that are approaching or waiting at the curbside

Imaging Specifications

System Overview		TrafiOne	
Functionalities	Curbside and on-crossing pedestrian and bicycle presence detection Vehicle tracking		
# detection zones	8 detection zones		
Configuration	Web page via secure Wi-Fi or Ethernet		
Thermal Sensor			
Resolution	160 x 120		
Frame rate	9 FPS		
Detector type	Focal Plane Array (FPA) uncooled VOx microbolometer LWIR sensor, 8 to 14 μm wavelength		
Streaming Video	RTSP		
Compression	H.264, MPEG-4, MJPEG		
Visual Sensor - optional			
Resolution	1080 x 1920 HD color CMOS		
Frame rate	30 fps		
Lens HFOV	95°		
Streaming Video	RTSP		
Compression	MJPEG, MPEG-4, H.264		
Product types			
Product name	TrafiOne 195	TrafiOne 156	
Part number	10-7070	10-7075	
HFOV	95°	56°	
Detection distance (depending on installation height)	0-15 m	10-25m	
Installation height	3.5 - 6m	5.5 - 8m	
Housing			
Material	Aluminum housing with PC GF10 sunshield		
Bracket	PA GF30 mounting clamps and aluminum tube		
Power, outputs, communication			
Input power	12 – 42 V AC/DC		
Power consumption	3 Watt		
Outputs	1 N/O and 1 N/C dry contacts direct 16 N/C dry contacts via TI x-stream		
Ethernet	10/100 MBps		
PoE	PoE A and PoE B		
Powerline Communication	Up to 4 MBps via TI x-stream		
Wi-Fi	IEEE 802.11		
Environmental			
Shock & Vibration	NEMA TS2 specs		
Materials	All weatherproof UV-resistant		
IP Rating	IP67		
Temperature range	-40°C to +55°C (-40°F to +131°F)		
FCC	FCC part 15 class A		
Regulatory			
EU Directives	EMC 2004/108/EC, RoHS 2011/65/EU		

PORTLAND

Corporate Headquarters
FLIR Systems, Inc.
27700 SW Parkway Ave.
Wilsonville, OR 97070
USA
PH: +1 866.477.3687

BELGIUM

FLIR Systems Trading
Belgium BVBA
Luxemburgstraat 2
2321 Meer
Belgium
PH: +32 (0) 3665 5100

FLIR ITS

Hospitaalweg 1B
B-8510 Marke
Belgium
PH: +32 (0)56 37 22 00

www.flir.com
NASDAQ: FLIR

Specifications are subject to change without notice
©Copyright 2014, FLIR Systems, Inc. All other brand and product names
are trademarks of their respective owners. The images displayed may not
be representative of the actual resolution of the camera shown. Images for
illustrative purposes only. (Created 04/16)

SWEDEN

FLIR Systems AB
Antennvägen 6,
PO Box 7376
SE-187 66 Täby
Sweden
PH: +46 (0)8 753 25 00

SANTA BARBARA

FLIR Systems, Inc.
70 Castilian Drive.
Goleta, CA 93117
USA
Ph: +1 866.477.3687

UK

FLIR Systems UK
2 Kings Hill Avenue
Kings Hill
West Malling - Kent
ME19 4AQ
United Kingdom
PH: +44 (0)1732 220 011